

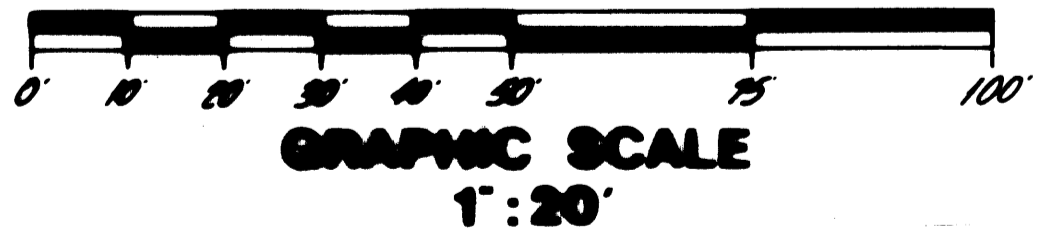
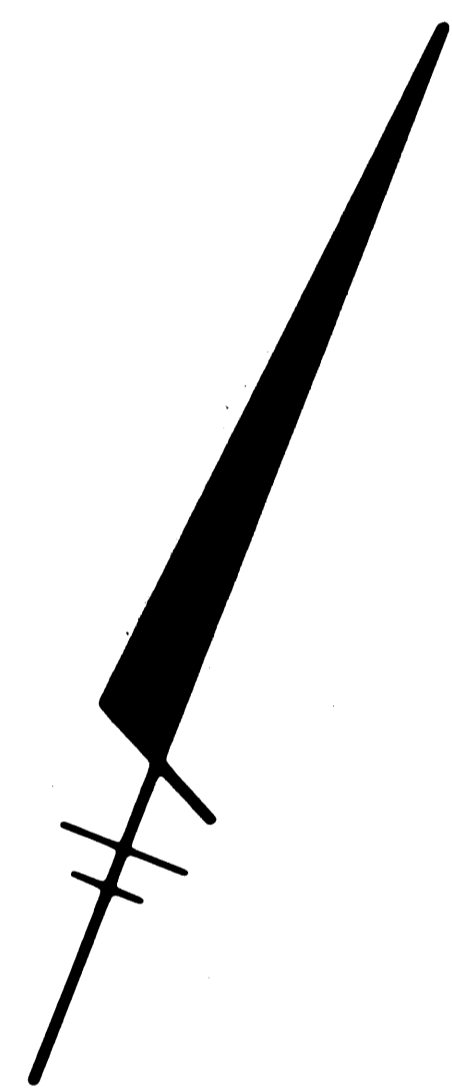
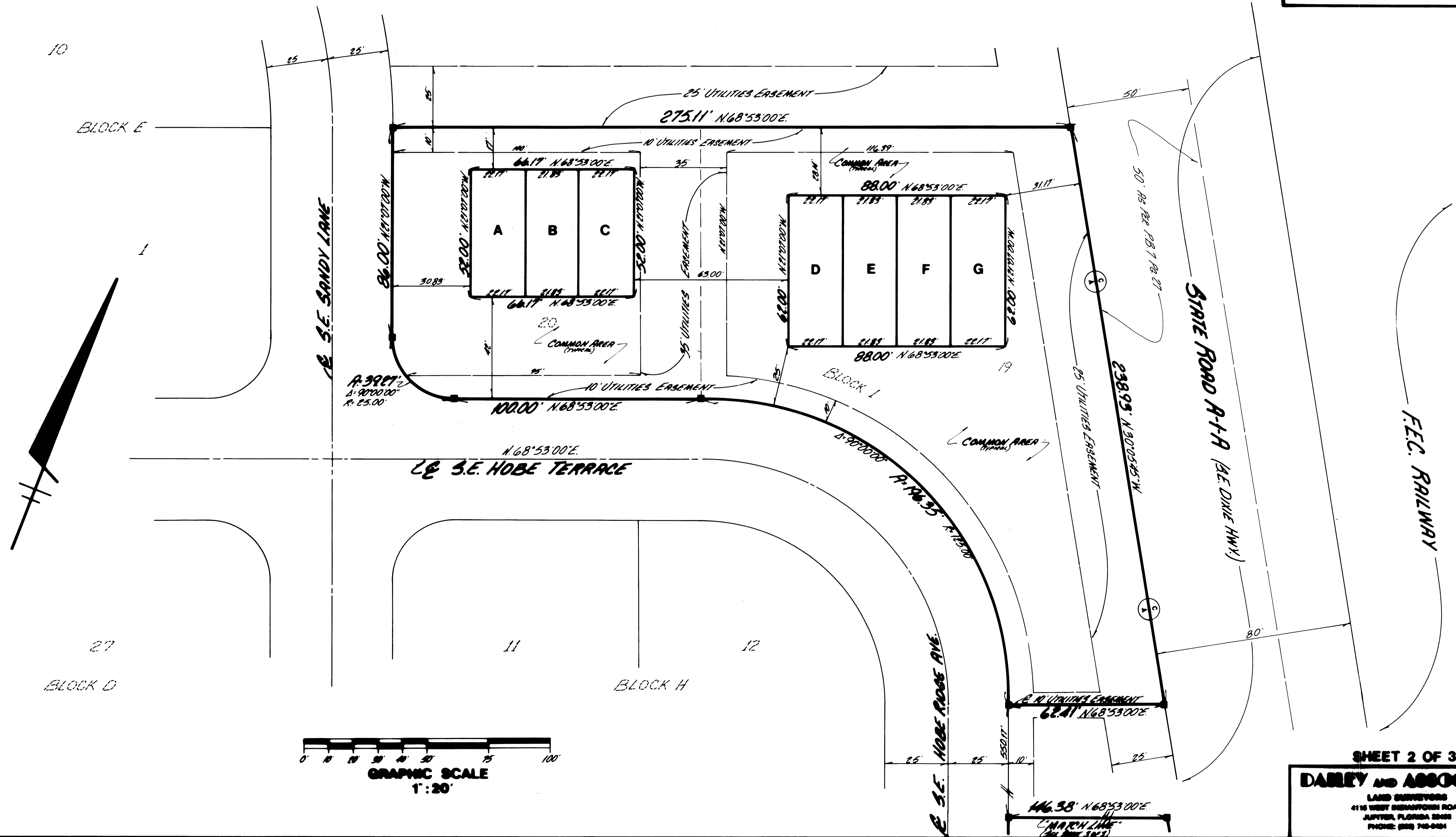
EASTRIDGE COURT NORTH

A REPLAT OF LOTS 14, 19, AND 20, BLOCK I, PLAT OF EASTRIDGE ESTATES,
PLAT BOOK 7, PAGE 27, MARTIN COUNTY, FLORIDA.

I, MARSHA STILLER, CLERK OF THE
CIRCUIT COURT OF MARTIN COUNTY,
FLORIDA HEREBY CERTIFY THAT THIS
PLAT WAS FILED FOR RECORD IN PLAT
BOOK 10, PAGE 76, MARTIN
COUNTY, FLORIDA, PUBLIC RECORDS,
THIS 14 DAY OF MAY, 1983

MARSHA STILLER
CLERK, CIRCUIT COURT
MARTIN COUNTY, FLORIDA

FILE NO. _____ BY: _____
DEPUTY CLERK



SHEET 2 OF 3
DARBY AND ASSOCIATES
LAND SURVEYORS
4115 WEST GERRARDEN ROAD
JUPITER, FLORIDA 33408
PHONE: (888) 748-0484